



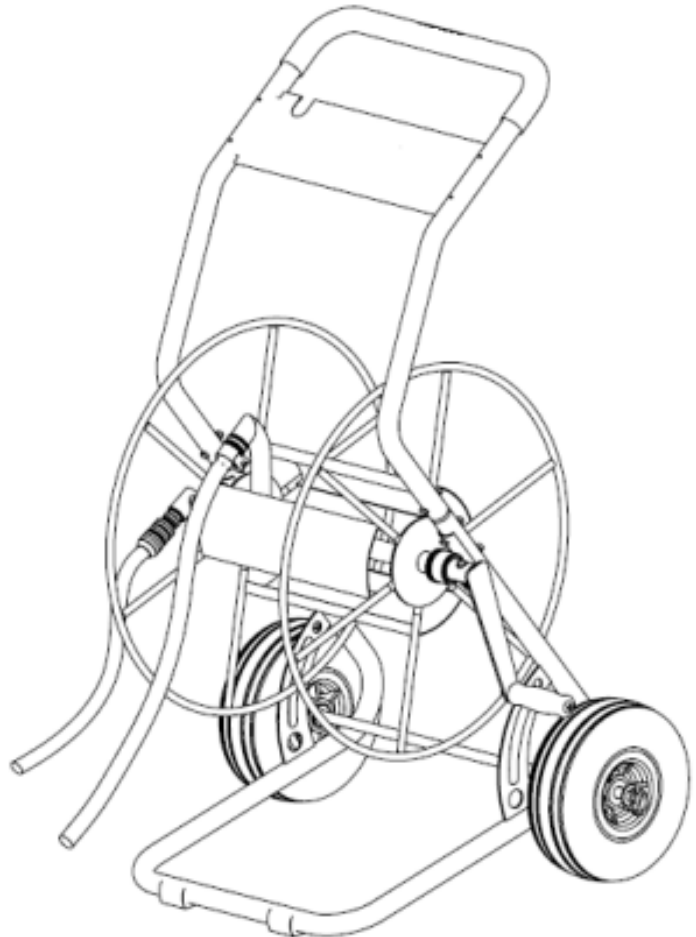
User manual

Item: Sirocco Hose Cart $\frac{3}{4}$ "

Item no: 070 41120

Connector: $\frac{3}{4}$ "

Capacity: 85m $\frac{3}{4}$ " hose

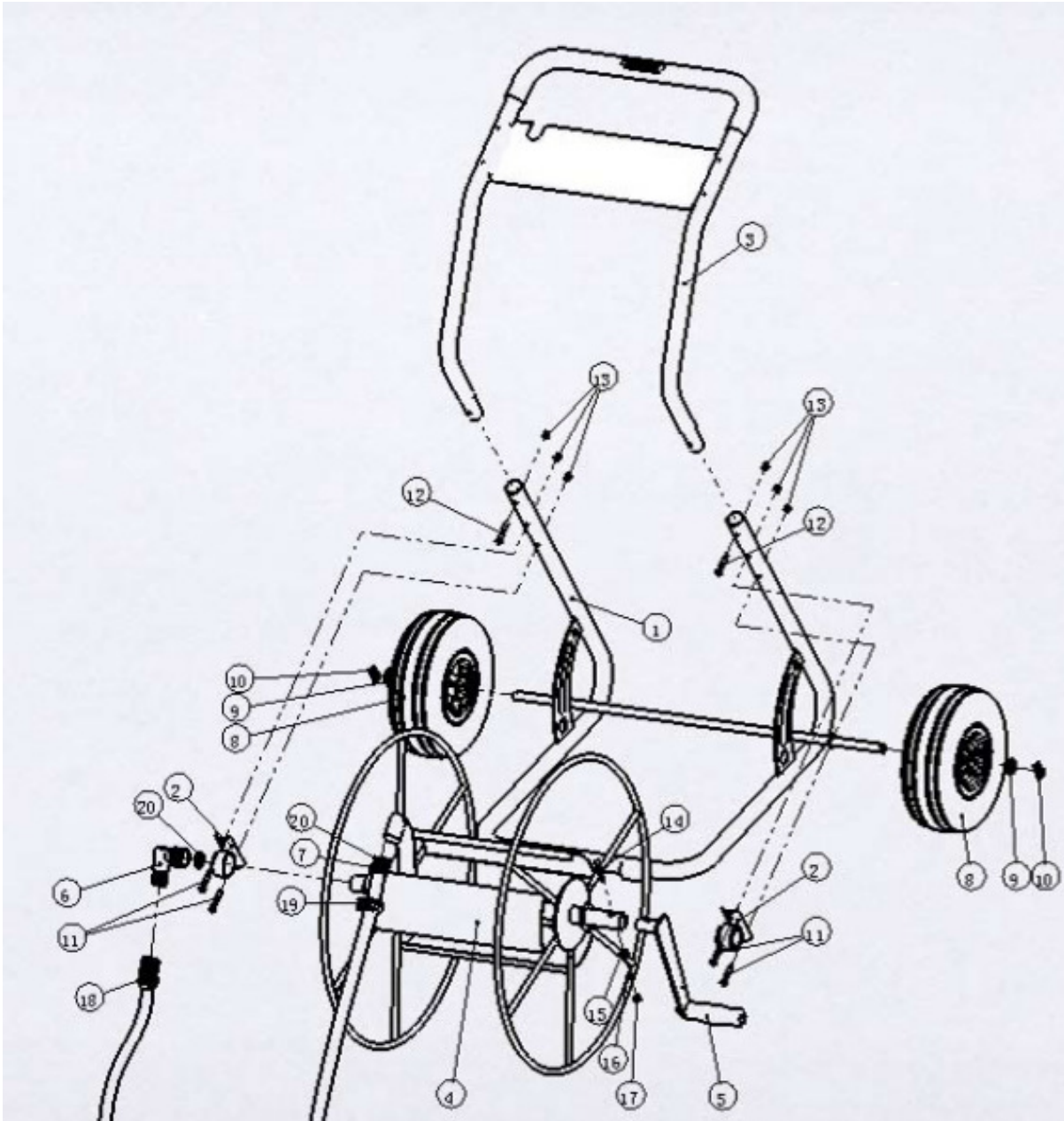


Before you begin

This product's packaging serves as protection during transport. Please ensure that all packaging material is removed prior to use and the hose cart is not damaged when removing the packaging.

Please make sure to read the assembly instructions prior to use. The hose cart contains parts that can get damaged during incorrect assembly. In this case, Sirocco will not assume any liability for such damages.

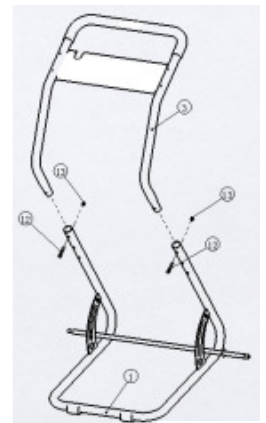
Exploded view



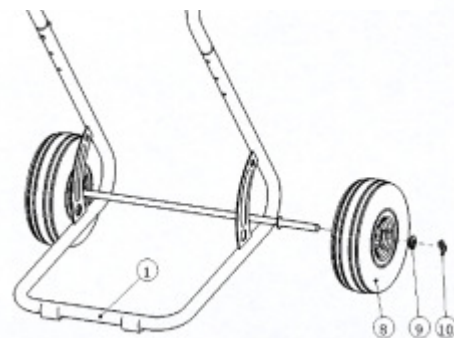
Assembly instructions

Attention: only tighten screws for all parts after complete assembly. Use two people to assemble. Carefully unpack all parts prior to assembly and display them on an even surface.

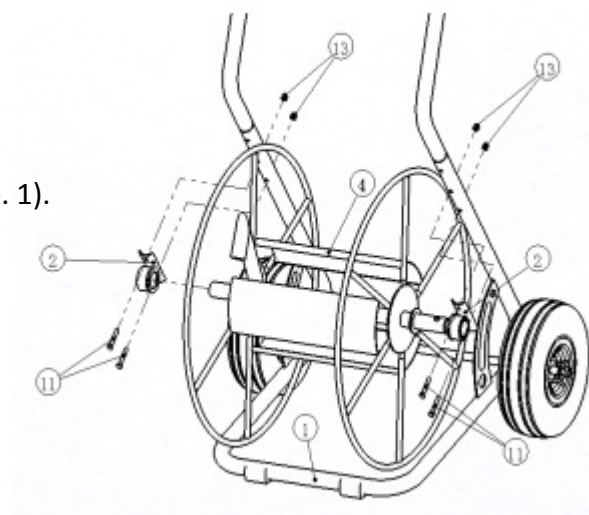
1. Insert the U-shaped handle (no. 3) into the frame (no. 1). Screw in the enclosed screws (M6 x 35 / no. 12) into the frame and affix them with the nuts (M6 no. 13) using the enclosed hexagon socket-head and an adjustable spanner.



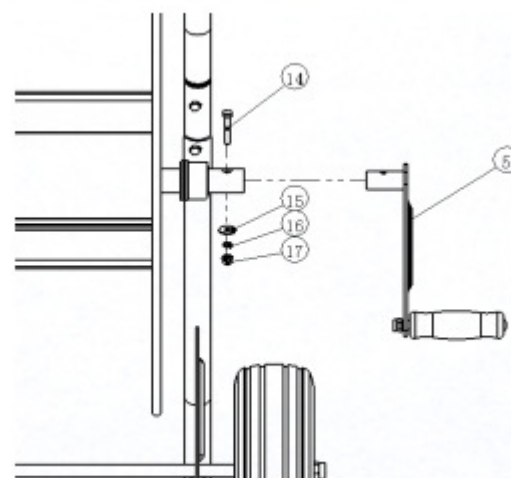
2. Insert both wheels (no. 8) into the axle, place the disks (no. 9) and the safety pins (no. 10). Ensure that the rings of the safety pins have been positioned downwards.



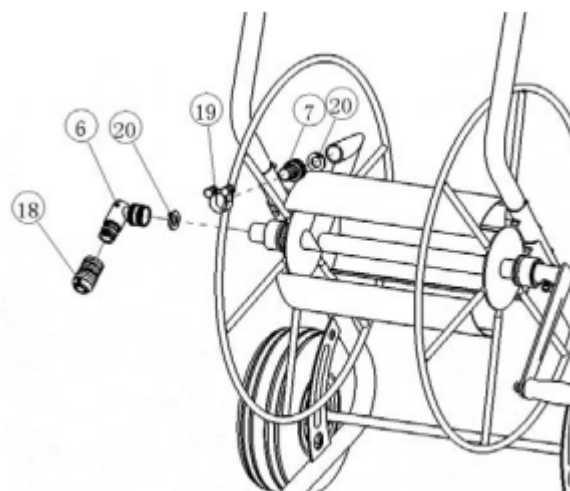
3. Set the axle sleeve (no. 2) on both drum sides. Align the bearing set holes (no. 2) with the frame holes (no. 1). Insert screws (M6 x 40 / no.11) and nuts (M6 / no. 13) and screw in tightly.



4. Insert the crank handle (no. 5) into the drum axle. Align the holes and affix the crank handle with the screw (M8 x 40 / no. 14), the disk Ø8 (no. 15), the spring washer Ø8 (No.16) and the nut (M8 / no. 17).

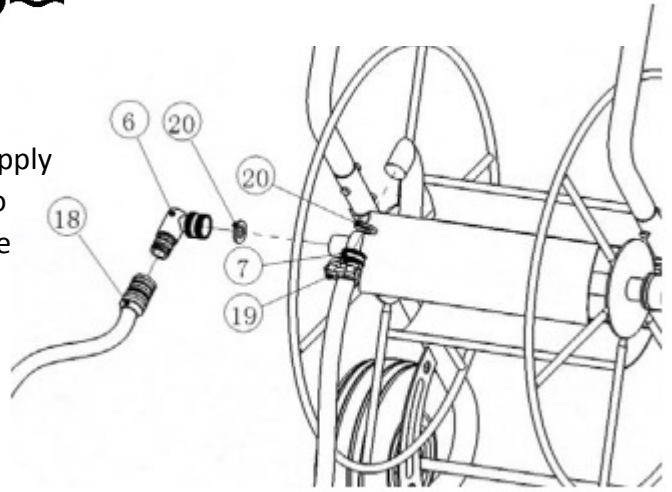


5. Place elbow swivel fitting (no. 6) and rubber seal ring as displayed and screw in tightly.
6. Place outlet tap (no. 7) and rubber seal ring (no. 20) as displayed and screw in tightly.



7. Connect the quick coupling (no. 18) with the water supply hose (not included in delivery contents) and stick onto slewing ring (no. 6). Connect the other end of the hose to the water supply.

8. Affix water hose (not included in delivery contents) to the connector on the hose drum.



Attention

1. Please ensure prior to rolling up the hose that the water supply has been disconnected.
2. Let off water pressure with open spray nozzle prior to usage.
3. Empty out water from hoses prior to storage.

Guarantee

Sirocco (manufacturer) guarantees that this hose cart is operational when properly used. Please contact your local dealer if this product or a part of it is defective.

This guarantee does not cover damages resulting from accident, negligence, improper usage, product manipulation, non-compliance with this user manual or repairs executed by unauthorised persons. This guarantee is only applicable to the hose cart, not to the accessories.

The manufacturer's responsibility is limited to the repair and/or exchange of the defective product. The manufacturer will under no circumstances assume responsibility for potential, accidental or successive damages.